

A LOUER



Furnished flat

- Surface : 65m²
- Disponibilité : 2024-04-10
- Référence : 2093S_Gasp_2ET
- Nombre d'étage(s) : 3
- Etage : 2
- Année de construction :

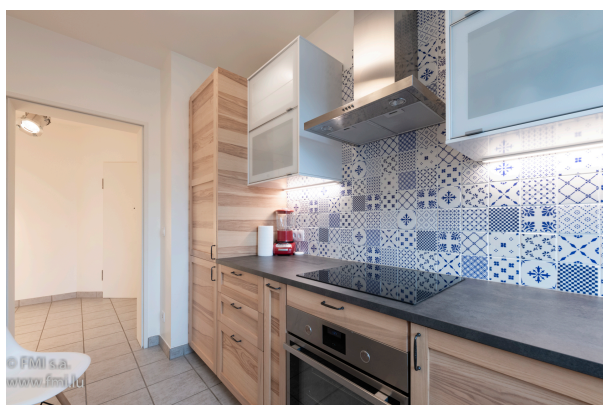
Caractéristiques

- Double vitrage
- Parlophone
- Buanderie
- Chauffage au gaz
- Chauffage central
- Radiateurs

LUXEMBOURG-GASPERICH

Loyer : 2 350 euros
Charges comprises

A LOUER



FMI

7 rue des Mérovingiens
8070 Bertrange
+352 24 83 24-1

<https://www.fmi.lu>

info@fmi.lu

A LOUER

SHORT-
or
MEDIUM-TERM
RENTAL,
FURNISHED
AND
EQUIPPED
ONE-BEDROOM
APARTMENT,
ALL-IN
FORMULA
(utilities
included,
including
internet)
with
TERRACE
and
indoor
PARKING
SPACE
in
LUXEMBOURG-GASPERICH.

This
+-65m2
apartment
is
located
on
the
second
floor
without
elevator,
in
a
small
residence.

**It
comprises**

:

-

Hall
with
built-in
cupboard

-

A
living
room

:

dining
room
with
access

to
the
terrace

-

Bathroom
with
WC,
washing
machine

and
dryer
-
Separate
fitted
kitchen
-
Separate
bedroom
-
A
small
dressing
room
-
Terrace
with
wooden
floor
-
A
shared
laundry
room
on
the
third
floor
-
An
indoor
parking
space
-
Bed
and
bathroom
linen
-
Household
utensils,
iron
and
ironing
board
-
Crocery
and
kitchen
utensils

**Want
to
find
out
more?**
The
main
room:
This
spacious,
light-filled
room
will
help
you
feel
immediately
at
home.
The
floor
is
covered

with
Solnhofer
natural
stone
tiles.

A
French
window
and
two
large
windows
give
this
room
plenty
of
light
and
direct
access
to
the
wood-floored
terrace.

Bathroom:
Fully
tiled,
it
features
a
combined
bathtub
and
shower,
washbasin,
mirror,
WC,
washing
machine,
tumble
dryer
and
storage
shelf.

Open-plan
fitted
kitchen:
The
open-plan
fitted
kitchen
features
a
dishwasher,
conventional
oven,
fridge,
hood,
ceramic
hob,
sink
and
plenty
of
storage
space.
The
floor
is
tiled.

Bedroom:
The
floor
is
tiled.
The
bedroom
has
a
double-glazed
window
with
blind.
It
also
has
a
wall-mounted
shelving
unit
and
a
desk.

Terrace:
The
Terrace
has
a
surface
area
of
approx.
9
m2
and
is
accessible
from
the
living
room.

Communal
laundry
:
The
shared
laundry
room
is
located
on
the
third
floor
and
is
very
spacious
and
bright.

Indoor
parking
space:
You
will
have
at
your
disposal
a
parking

space
located
inside
the
building,
in
the
basement.

Dressing
room:
A
small
dressing
room
with
two
built-in
closets

**Practical
information:**

Deposit:
2
months'
rent
Rent
includes
service
charges
but
excludes
insurance
Agency
commission:
One
month's
rent
+
17%
VAT,
payable
by
tenant
Pets
are
not
accepted
Non-smoking
apartment

Location:

The
apartment
is
located
in
the
heart
of
the
Gasperich
district
of
Luxembourg
City,
close
to
restaurants,
a
driving
school,
a
butcher's

shop,
hairdressers,
a
pharmacy,
a
hotel
and
the
train
station.

Buses

:
The
apartment
is
100
meters
from
Gasperich's
main
bus
stop
"Bei
der
Auer",
from
where
lines
2;
23;
18
and
others
are
accessible.
These
take
you
to
Kirchberg,
Gare
Centrale
and
other
points
of
interest
around
Luxembourg
City.
(Very
high
frequency)

**Our
opinion**

:
This
"All-In"
concept
is
very
interesting!!!
You
arrive
with
your
suitcases
and
that's
it!

No

need
to
worry
about
bed
linen
or
bathroom
towels.
Dishes,
cutlery,
kitchen
utensils...
it's
all
there.

Very
close
to
everything,
you're
just
a
short
bus,
train
or
car
ride
away
from
Kirchberg,
Luxembourg
City,
the
train
station
or
the
Cloche
d'Or
district.

Shops
around
the
building
let
you
do
your
shopping
or
dine
in
one
of
the
many
restaurants
without
using
public
transport.

Energy
passport
in
progress.



FMI

7 rue des Mérovingiens
8070 Bertrange
+352 24 83 24-1

<https://www.fmi.lu>

info@fmi.lu

A LOUER

