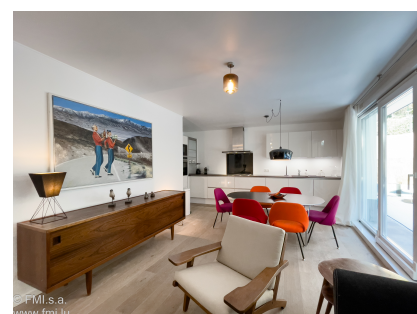


A LOUER



Furnished flat

- Surface : -
- Disponibilité : 2024-04-08
- Référence : 4168S_Schaa_Kirch
- Nombre d'étage(s) : 3
- Etage :
- Année de construction : 0

Caractéristiques

- Double vitrage
- Parlophone
- Chauffage au gaz
- Chauffage central
- Radiateurs
- Antenne Satellite
- Volets Roulants

LUXEMBOURG-KIRCHBERG

Loyer : 2 950 euros
Charges comprises

A LOUER



FMI

7 rue des Mérovingiens
8070 Bertrange
+352 24 83 24-1

<https://www.fmi.lu>

info@fmi.lu

A LOUER

ALL IN SHORT OR MEDIUM TERM RENTAL in Luxembourg, 2 km from the European Court of Justice and 2.5 km from the EIB! Furnished and equipped 2-bedroom duplex apartment with furnished terrace, large garden and indoor parking space. Rent includes : Heating, water, electricity, TV, Internet.

Your apartment has :

Level 1:

- Apartment entrance
- 1 Living/dining room
- 1 Open-plan fitted kitchen
- 1 Guest WC
- 1 Large furnished terrace
- 1 Large wooded garden

Level 0 :

- 2 Bedrooms, one with access to a terrace
- 1 Bathroom with bath, walk-in shower, washbasin and WC
- 1 Private washing machine and dryer
- 1 Terrace

Plus :

- 1 Parking space (shared)
- Bed and bathroom linen
- Kitchen utensils, crockery, Nespresso coffee machine, ...

Unoverlooked apartment

The duplex is located in a small, well-kept residence.

The apartment is fully furnished and equipped. Bed and bathroom linen are provided.

It has been tastefully furnished in a modern, cosy, ready-to-live-in style. You'll have all the comforts you need for a pleasant stay in Luxembourg.

Decorated with designer furniture, this apartment will be appreciated by all.

Crockery, cooking utensils, cutlery, coffee machine, electric kettle and toaster are all provided.

Included in the rent:Water consumption, electricity, heating, maintenance of common areas, garbage tax, Internet.

Practical information :

Deposit: 2 months' rent

Agency commission: 1 month's rent + 17% VAT payable by tenant

Pets are not accepted

Non-smoking residence

Location:

Bus stop

230 meters: lines 25, 30, 32, 81

250 meters: lines 4, 25, 78,CN6

European School (1.2 km)

Court of Justice (2 km)

EIB (2.5 km)

La Coque swimming pool (3 km)

Auchan supermarket and shopping mall (4.4 km)

Great opportunity!

Energy passport in progress

For further information, please contact Frédérique FERY on +352 621 29 39 21 (Also WhatsApp)



FMI

7 rue des Mérovingiens
8070 Bertrange
+352 24 83 24-1

<https://www.fmi.lu>

info@fmi.lu

LUXEMBOURG-KIRCHBERG

Loyer : 2 950 euros
Charges comprises

A LOUER



FMI

7 rue des Mérovingiens
8070 Bertrange
+352 24 83 24-1

<https://www.fmi.lu>

info@fmi.lu