

A VENDRE



Apartment

- Surface : 98.25m²
- Disponibilité :
- Référence : 4171S_Appart_2ch_Sau_Kirch
- Nombre d'étage(s) :
- Etage : 3
- Année de construction : 1975

Thermal insulation class



CO2 emissions



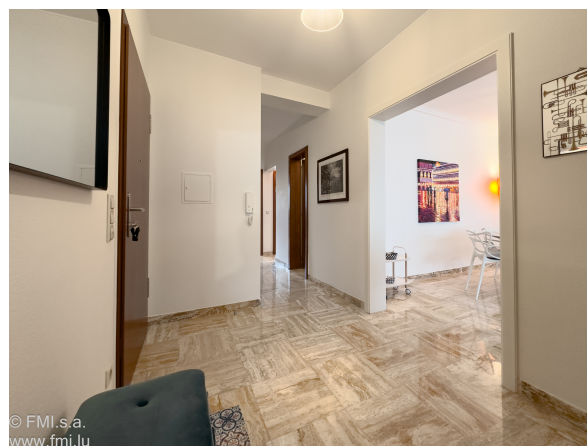
Caractéristiques

- Double vitrage
- Parlophone
- Buanderie
- Radiateurs
- Ascenseur
- Volets Electriques

LUXEMBOURG

850 000 euros

A VENDRE



FMI

7 rue des Mérovingiens
8070 Bertrange
+352 24 83 24-1

<https://www.fmi.lu>

info@fmi.lu

A VENDRE

Renovated two-bedroom apartment for sale in Luxembourg Kirchberg with balcony, indoor parking space and cellar. Unobstructed view.

1 km from the European institutions and the European Court of Justice!

This bright apartment was renovated in 2019. It is located on the 3rd floor of a building with two elevators. It has a living area of +- 98.25 m2 (excluding balcony and cellar).

It features:

- 1 Hall with two built-in closets
- 1 Living/dining room
- 1 Very nice separate fitted kitchen by LAGO
- 2 Large bedrooms, one with balcony
- 1 Shower room with WC and bidet
- 1 Guest WC
- 1 Storage room in apartment with space for washing machine
- 1 Large cellar (+- 11 m2)
- 1 Private indoor parking space

Orientation:

The apartment is traversing.

The living/dining room and kitchen face SOUTH-EAST, while the bedrooms face NORTH-WEST.

Fixtures and fittings :

Double-glazed windows with electric shutters

Boat blinds or curtains on all windows

Ceiling lights in all rooms

Large wall-mounted flat-screen TVs available

Parquet flooring in bedrooms, polished travertine in hall and living room, tiled floors in kitchen, bathroom and laundry room

Secure apartment entrance door

Two built-in closets in the hall

Custom-made closet in bedroom

New LAGO kitchen

New shower room

New guest WC

Polished travertine floors

Agency commission: payable by seller

Furniture (LAGO, KARTELL, FLOU ...) can be purchased for a very attractive fixed price.

Very well appointed. A must-see!

For further information or to arrange a viewing, please contact your FMI s.a. advisor Frédérique FERY on 00352 621 29 39 21 (also WhatsApp) or by e-mail at frederique@fmi.lu



FMI

7 rue des Mérovingiens
8070 Bertrange
+352 24 83 24-1

<https://www.fmi.lu>

info@fmi.lu

LUXEMBOURG

850 000 euros

A VENDRE



FMI

7 rue des Mérovingiens
8070 Bertrange
+352 24 83 24-1

<https://www.fmi.lu>

info@fmi.lu