

A LOUER



Furnished flat

- Surface : -
- Disponibilité : 2026-03-02
- Référence : 4200S_S_Appart_2Ch_Cents_5A
- Nombre d'étage(s) : 5
- Etage : 5
- Année de construction :

Caractéristiques

- Double vitrage
- Parlophone
- Chauffage au gaz
- Chauffage central
- Radiateurs
- Antenne Satellite

LUXEMBOURG-CENTS

Loyer : 2 100 euros
Monthly charges : 350 euros

A LOUER



FMI

7 rue des Mérovingiens
8070 Bertrange
+352 24 83 24-1

<https://www.fmi.lu>

info@fmi.lu

A LOUER

SHORT- or MEDIUM-TERM RENTAL in Luxembourg-Cents. Furnished and equipped 2-bedroom apartment. Rental charges include internet, but not electricity or rental insurance.

You will have at your disposal:

- 1 Hall
- 1 Living/dining room
- 1 Separate fitted kitchen
- 2 bedrooms
- 1 storeroom
- 1 Bathroom with washbasin and WC
- 1 Washing machine in kitchen
- Bed and bathroom linen
- Crockery and kitchen utensils

The apartment is fully furnished and equipped.
It is located on the 5th floor with elevator.

You'll have all the comforts you need for a pleasant stay in Luxembourg.
This apartment will be appreciated by all.

Practical information:

The monthly advance on charges includes: heating, water, maintenance of common areas, garbage tax, internet.

You will be responsible for: private electricity and insurance.

Occupancy :

Charges are based on occupancy by two people. A supplement of €80.00 will be charged for occupancy by three people.

Deposit: 2 months' rent

Agency commission: 1,200 Euros + 17% VAT payable by tenant and 1,200 Euros + 17% VAT payable by owner.

Pets are not accepted

Non-smoking apartment

Location :

Buses:

170 meters away: bus lines 7, 14, 25, 29, 73, 83, 93 and CN1

Cycling :

Vel'OH! station Carmel station 350 m away

By car :

A1 freeway interchange: 2 km

Findel airport: 3 km

Luxembourg-Kirchberg: 4.2 km

Luxembourg Cloche d'Or: 7 km

Surroundings:

Less than 150 meters away: Supermarket, pharmacy, medical center, playground, crèches, ...

Our opinion :

Great opportunity!

Completely repainted apartment.

Furnished and equipped.

For further information or to visit, please contact Mrs. FERY Frédérique at 00352 621 29 39 21 (also WhatsApp)

Energy passport in progress



FMI

7 rue des Mérovingiens
8070 Bertrange
+352 24 83 24-1

<https://www.fmi.lu>

info@fmi.lu

LUXEMBOURG-CENTS

Loyer : 2 100 euros
Monthly charges : 350 euros

A LOUER



FMI

7 rue des Mérovingiens
8070 Bertrange
+352 24 83 24-1

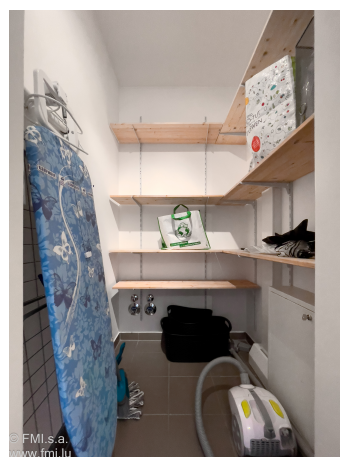
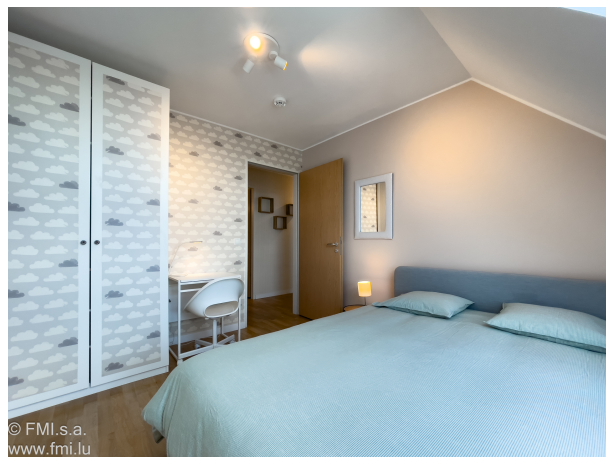
<https://www.fmi.lu>

info@fmi.lu

LUXEMBOURG-CENTS

Loyer : 2 100 euros
Monthly charges : 350 euros

A LOUER



FMI

7 rue des Mérovingiens
8070 Bertrange
+352 24 83 24-1

<https://www.fmi.lu>

info@fmi.lu