

# A LOUER



## Furnished flat

- Surface : 66m<sup>2</sup>
- Disponibilité : 2026-05-04
- Référence : 4382S\_Bonnev\_2Ch
- Nombre d'étage(s) : 4
- Etage : 2
- Année de construction : 0

## Caractéristiques

- Double vitrage
- Parlophone
- Buanderie
- Chauffage au gaz
- Chauffage central
- Radiateurs
- Ascenseur
- Antenne Satellite
- Volets Roulants

# A LOUER



# A LOUER

**SHORT-, MEDIUM-, OR LONG-TERM RENTAL in Luxembourg-Bonnevoie! 1.5 km from downtown Luxembourg! Fully furnished 2-bedroom apartment with a basement and parking space, fully furnished and equipped, all utilities included, including Wi-Fi and TV. Insurance not included.**

**You will have access to:**

- 1 Entryway
  - 1 Living/Dining Room
  - 1 Fully equipped open-concept kitchen
  - 2 Bedrooms with queen-size beds
  - 1 Shower room with sink and wall-mounted toilet
  - 1 Washer/dryer combo in the kitchen
  - 1 Balcony accessible from the living room
  - 1 Storage room
  - 1 Private parking space (parklift)
  - Bed and bath linens
  - Dishes and kitchen utensils
  - Vacuum cleaner, ironing board, and iron, etc.
- The apartment is fully furnished and equipped.

Want to learn more?

**The entryway:**

It leads to all the rooms in the apartment.

Video intercom, coat closet, reinforced security door with peephole, electrical panel.

The floor is solid oiled hardwood.

**The living/dining room:** with access to 1 east-facing balcony.

You'll have at your disposal: 1 three-seater sofa, 1 coffee table, 1 rug, 1 TV stand, 1 flat-screen smart TV (without cable subscription), 1 Wi-Fi connection, as well as 1 dining table with 4 white chairs.

The floor is solid wood parquet, which feels pleasant under bare feet.

Very high-quality finish.

A French door leads to the balcony, allowing smokers to enjoy a break.

Another window next to the French door brings plenty of light into this beautifully furnished room.

Room orientation: EAST

**The open-concept kitchen** features a central island. It is fully furnished and equipped.

Two bar stools in front of the island allow you to eat quickly or let your guests chat freely without isolating the cook.

It is equipped with: 1 7-burner glass-ceramic cooktop, 1 dishwasher, 1 combination oven (conventional and microwave), 1 conventional oven, 1 washer/dryer, 1 fridge-freezer, 1 range hood, and plenty of storage.

Also provided for your use: 1 electric kettle, 1 toaster, 1 NESPRESSO coffee machine, as well as dishes and kitchen utensils.

The windows in every room are double-paned. Each window has a strap-operated roller shutter and 1 blackout blind.

Heating: radiators in all rooms

**The first bedroom:**

It is furnished with a double bed, 2 nightstands with bedside lamps, 1 wardrobe with two sliding doors, 1 wardrobe with hinged doors, and 1 desk with a chair.

Solid wood parquet flooring.

Bedding is provided.

**The second bedroom:**

It is equipped with a double bed, 2 nightstands with bedside lamps, and 1 wardrobe with two sliding doors.

Bedding is provided.

**The Shower Room:**

Features a beautiful walk-in shower with a rain showerhead, 1 wall-mounted toilet, a ceiling with recessed spotlights, 1 sink with a two-drawer vanity, 1 hair dryer, and 1 towel warmer.

The room is fully tiled (floor and walls).

Bathroom linens are provided.

**Private indoor parking space (Park Lift system) :**

Included in the rent.

Located on level -1 of the building

**Storage room:**

Provides space to store bulkier items such as suitcases and various boxes.

**Practical information:**

Security deposit: 2 months' rent

Agency commission: 1,350.00 Euros + 17% VAT payable by the tenant and 1,350.00 Euros + 17% VAT payable by the landlord

**The neighborhood:**

The apartment is located in the Bonnevoie neighborhood, near the Rotondes.

Police, public transportation, banks, supermarkets, restaurants, daycare centers, nurseries, doctors, veterinarians, and pharmacies are all within walking distance (less than 1 km).

Luxembourg city center: 3 km

**Bus:**

20 meters away: Bus lines 461, EE2, and EE3

**Tram and train:**

100 meters away, the pedestrian bridge allows you to quickly reach the train station.

The tram stop is located in front of the train station

**Car:**

Close to several major roads providing access to:

Luxembourg city center: 3 km (8 min by car)

La Cloche d'Or: 4 km (8 min by car)

Kirchberg: 14 km (16 min by car)

Luxembourg Airport: 17 km (25 min by car)

Highway access to France, Belgium, and Germany: 5 minutes

**Our review:**

This two-bedroom apartment, available for short- or long-term rent and tastefully furnished, is ideally located, allowing residents to quickly walk to a bus or tram stop for easy access to all neighborhoods in Luxembourg and surrounding cities. Its central location means you won't need to take your car, whether for shopping or commuting to work.

Beautifully furnished and fully equipped, this apartment means you won't need to bring anything from home. Everything you need is right here!

With plenty of nearby shops and restaurants, you won't need to drive to run errands. That's a significant time-saver...



FMI

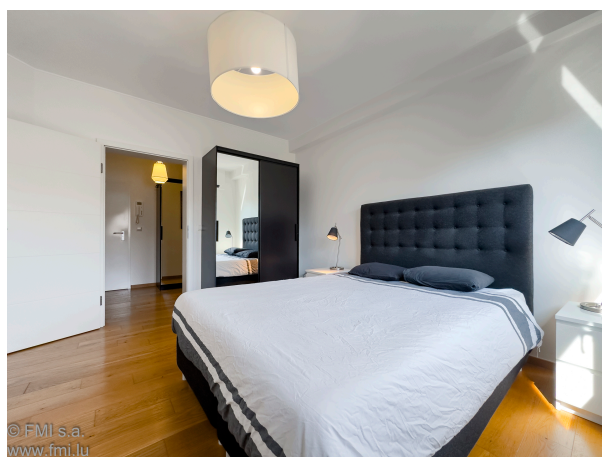
7 rue des Mérovingiens  
8070 Bertrange

+352 24 83 24-1

<https://www.fmi.lu>

[info@fmi.lu](mailto:info@fmi.lu)

# A LOUER



# A LOUER

